

RUSCO SUPERDECK extruded aluminum canopies



SUPERDECK aluminum components are available in CLEAR ANODIZED ALUMINUM or painted any color by Sherwin-Williams process to AAMA 2603, 2604 or 2605 specification. These specifications cover the wide spectrum from Baked Enamel organic coatings to High Performance PVDF resin architectural applications.

Shown here are our most popular colors. If your product is different, we can produce a custom sample for your unique finish.

For more samples or information call or email **RUSCO** today.

Rusco Ready Finishes



Clear Anodized Aluminum



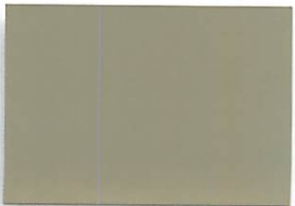
Bronze



White



Ivory



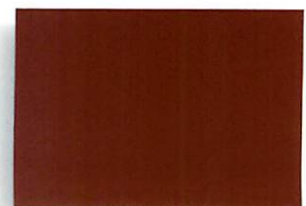
Sandstone



Bone White



Gray



Brick Red



Hartford Green



Black



Dark Brown



Silver



Rusco Custom Canopies 6808 Barger Pond Way, Knoxville, TN 37912
www.ruscocanopies.com
 865-938-4717



We offer a wide variety of architectural finishes that meet and exceed AAMA's (American Architectural Manufacturers Association) voluntary specifications for performance requirements and testing procedures.

	AAMA 2605 (1)	AAMA 2604 (1)	AAMA 2603 (1)
Suggested uses	High-performance, architectural and monumental applications	Commercial, industrial, high-end residential and high-traffic areas	Residential, light commercial and all interior applications
South Florida weathering			
• Color retention	10-yr fade = 5 ΔE max (2)	5-yr fade = 5 ΔE max (2)	1-yr slight fade
• Chalk resistance (whites)	10-yr chalk = 6 or better (3)	5-yr chalk = 8 or better (3)	1-yr slight chalk
• Chalk resistance (colors)	10-yr chalk = 8 or better (3)	5-yr chalk = 8 or better (3)	1-yr slight chalk
• Gloss retention	10-yr = 50% retention min	5-yr = 30% retention min	No specification
• Erosion resistance	10-yr = 10% loss max	5-yr = 10% loss max	No specification
Dry film thickness pretreatment system	1.2 mils minimum Meet AAMA specifications	1.2 mils minimum Meet AAMA specifications	0.8 mils minimum Meet AAMA specifications
Accelerated testing			
• Salt spray	4,000 hrs – passed	3,000 hrs – passed	1,500 hrs – passed
• Humidity	4,000 hrs – passed	3,000 hrs – passed	1,500 hrs – passed
Compliant systems	70% PVDF resin (4)	50% PVDF resin (4)	Baked enamel

(1): Contact the American Architectural Manufacturers Association (AAMA) for the latest revisions and changes to AAMA specifications.

(2): As measured using ASTM D 2244 Section 6.3 procedure comparing an unexposed retain panel to the exposed panel after removal of dirt and chalk.

(3): As measured using the ASTM D 4214 Method D-659 procedure.

(4): Polyvinylidene fluoride (PVDF) is the chemical term for both Kynar 500™ and Hylar 5000™.

Kynar and Kynar 500 are registered trademarks of Arkema, Inc. Hylar and Hylar 5000 are registered trademarks of Solvay Solexis.

SHERWIN-WILLIAMS.

www.ruscocanopies.com