

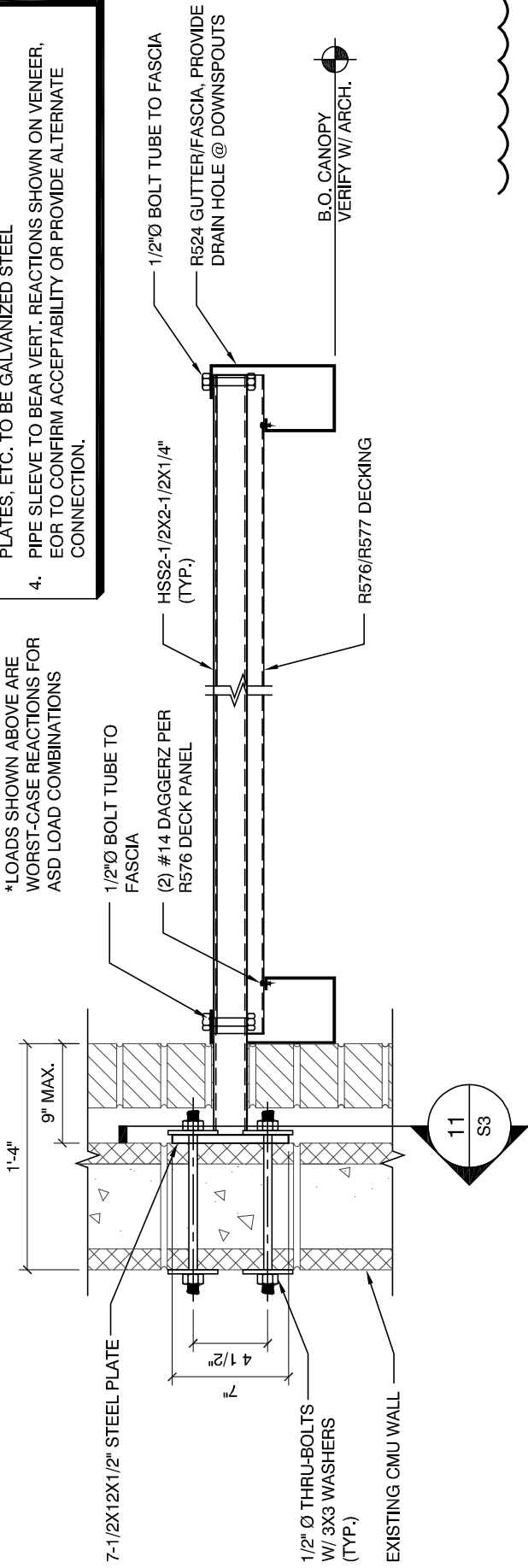
MAX. CANOPY REACTIONS
@ OUTRIGGER CONNECTIONS

$M_z = 13320$ in-lbs
 $F_y = 320$ lbs

NOTES:

- CANOPY HAS BEEN DESIGNED FOR DRIFT LOADING. SEE DESIGN LOADS FOR CANOPY DRIFT LOADING CRITERIA.
- THIS DESIGN FOR ANCHORAGE TO EXISTING STRUCTURE ONLY. BUILDING DESIGNER TO VERIFY ADEQUACY OF STRUCTURE TO RESIST ADDITIONAL LOADING SHOWN. THIS ENGINEER NOT RESPONSIBLE FOR THE EXISTING STRUCTURE.
- ALL BOLTS, NUTS, WASHERS, EYEBOLTS, EXPANSION BOLTS, PLATES, ETC. TO BE GALVANIZED STEEL
- PIPE SLEEVE TO BEAR VERT. REACTIONS SHOWN ON VENEER, EOR TO CONFIRM ACCEPTABILITY OR PROVIDE ALTERNATE CONNECTION.

*LOADS SHOWN ABOVE ARE WORST-CASE REACTIONS FOR ASD LOAD COMBINATIONS



CONNECTION DETAIL

SCALE: 1 1/2" = 1'-0"

#12-24 X 1 1/4" SELF TAPPING SCREWS @ 30" O.C.(TYP.)

